

Main menu - Service menu

Software updating via the USB port

A pre-requirement for the updating via a USB device is an empty USB device (such as a USB stick), formatted as FAT32, containing only the operating software or channel list to be loaded.



It is essential that the operating software to be loaded is stored on the USB device under the following directory structure:

Main folder: kathrein
Subfolder: └── ufs903

It is essential that the channel list to be loaded is stored on the USB device under the following directory structure:

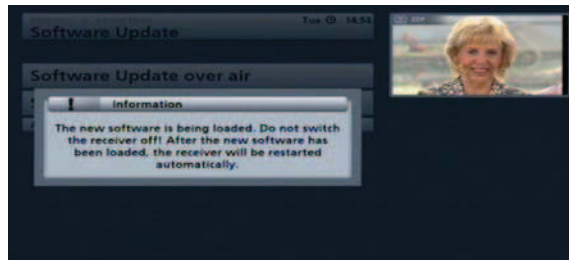
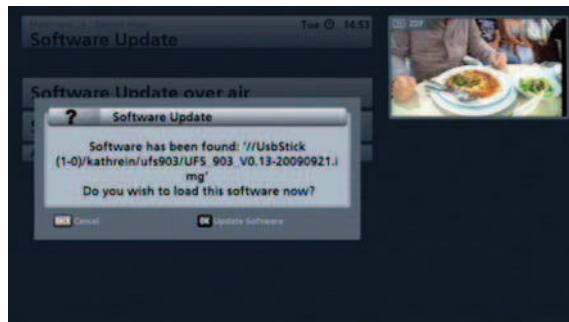
Main folder: kathrein
Subfolder: └── channellist

You can also download the updates from the Internet. The address is: <http://www.kathrein.de>
You will find the software at “Service” → “Software and Download” → “Receiver” → “UFS 903”

Press the  button to start updating via the USB.









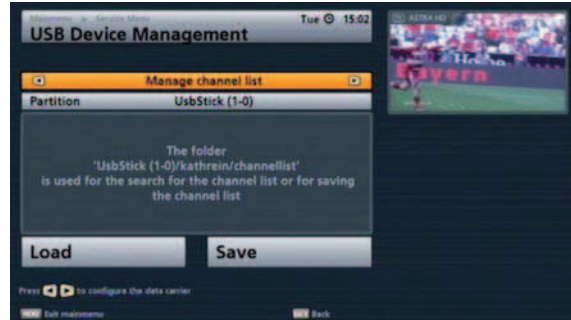
The following display appears (example):



Main menu - Service menu

Manage channel list

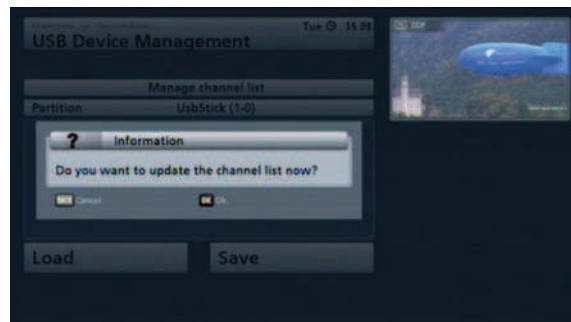
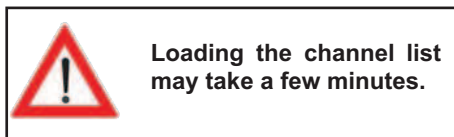
Use the   buttons to select “Manage channel list”. Use the   buttons to switch to the “USB data carrier” line. If several data carriers are connected to the receiver, you can use the   buttons here to select the USB data



carrier on which the channel list to be loaded is held, or the USB data carrier on to which the current channel list for your receiver should be stored/saved.



Load

Use the  buttons to switch to the “Load” line. Press the  button. The following display appears:

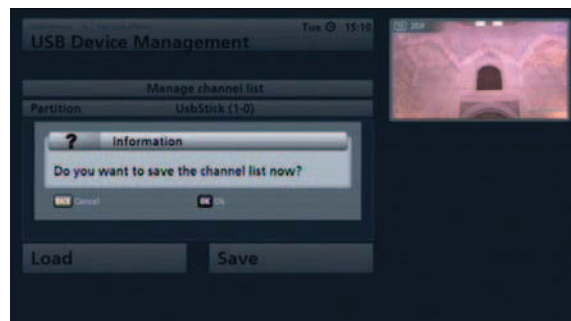



Confirm with the  button. The channel list is being loaded. On completion the receiver automatically skips back to the “USB device management” menu.

Save

Use the  buttons to switch to the “Save” line. Press the  button. The following display appears:

The receiver here offers you the option of saving to a USB device the channel list you are currently using, so that you can recover it later if required. Instructions on how to reload the channel list can be found at the top of this page (item “Load”).



Confirm with the  button. The channel list is being saved. On completion the receiver automatically skips back to the “USB device management” menu.