

## **Updating the UFE 370/S software**

Please note that the Editor „UFE305\_Editor“ is only released to load the operational software. At the moment one cannot read out and edit the channel tables! We will inform you as soon as this can be carried out.

The programme „UFE305\_Editor“ is to be used to update the operational software of the DVB – T Receiver UFE 370/S.

Due to different tuner chips being used in different production series of the Receiver UFE 370/S two differing softwares are available.

Before down-loading the new software into the receiver one must check which software is suitable for the receiver you have.

**You can find the relevant information on the used receiver software in the menu point „Installation“ under the section „System set up“ and „System information“.**

2.3 (IB18) = Samsung Tuner

2.3 (IB1A) = Philips Tuner

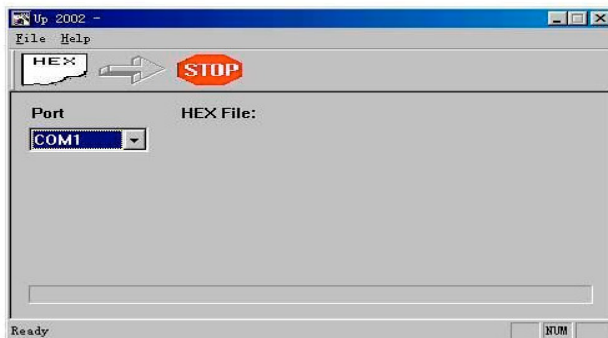
Example:

UFE370\_(IB18)Samsung30April2004.hex = Samsung Tuner

### **Downloading the operational software into the UFE 370/S:**

- Connect the receiver to the mains net.
- Connect the PC to the receiver using a crossed null modem cable.

- Press and hold down the key „Operation/Stand-by“ on the receiver’s front panel. Now switch on the main switch on the receiver’s rear panel. In the receiver’s display you will now see „load“.
- Start up the download programme „UFE305\_Editor“.
- Choose the COM interface to be used on the PC.



- Click in the function „HEX“ the hex file of the wanted software and then click on „open“.
- When you click on the key „P →“ the download procedure will be started.
- Wait for approximately 30 seconds after the data has been downloaded until you can see in the receiver’s display the information „OK“. The download procedure has then been completed.
- After the downloading has been successfully carried out, switch the receiver off using the main switch – and then switch it on again.
- In the menu point „Installation“ under the point „System set up“ one now has to carry out a factory reset. To do this one must enter in the PIN number: 0000.
- The displayed information „All data will be deleted. Are you sure?“ is to be confirmed using the key „OK“.

**Note:**

**When one accidentally downloads the incorrect software into the receiver, the receiver will not function any more. Aid measure: Repeat the download procedure with the correct software – the receiver should then function again correctly.**