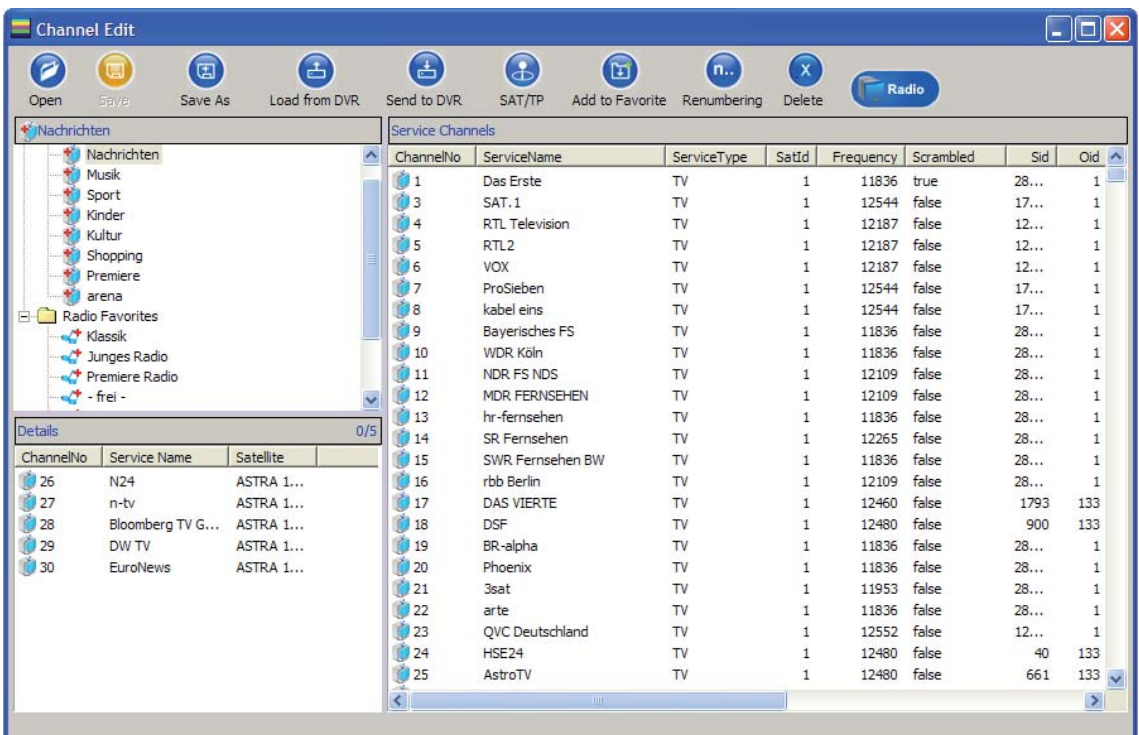


PVR Manager

UFS 700, UFS 705, UFS 710, UFS 712
and UFS 740



PVR MANAGER

SAFETY INSTRUCTIONS

Before installing the KATHREIN receiver PVR Manager, make sure to read the receiver's safety instructions and to regard them at all times.

KATHREIN UFS 7XX RECEIVERS CURRENTLY SUPPORTED

UFS 700, 705, 710, 712 and 740 (Connection via receiver RJ 11 interface)

GENERAL NOTICE

KATHREIN cannot be held liable for damage, loss of data or consequential loss of any kind (e.g. loss of profit, interruption of production, loss of data and information, or other detriment to assets) resulting from the use or non-usability of this KATHREIN product, even where KATHREIN has pointed out the possibility of such loss occurring.

SYSTEM REQUIREMENTS

Your PC must be running Windows 2000, Windows XP or Windows Vista (32-bit version only) and your PC/laptop must be equipped with a free RS 232 port.

REQUIRED SOFTWARE

"PVR Manager" version 2.0.0.1 of 18.12.2007 (application and manual as a PDF file) can be downloaded from "<http://www.kathrein.de>". Software is located under "Service" → "Software and Downloads" → "Receivers" → "UFS 7xx"

UFS 700/705/710	as of software version 2.10
UFS 712	as of software version 2.01
UFS 740	as of software version 2.01

CONNECTION CABLE

In order to connect your PC to a Kathrein receiver, an adapter cable is required (Sub D, 9-pin to Western) as well as a crossed null-modem cable. Do not connect the receiver to your PC until you have installed the software. The required adapter cable can be ordered from our Service Centre, ESC in Grassau. Their address is:

**ESC Electronic Service
Chiemgau GmbH
Bahnhofstraße 108**

83224 Grassau/GERMANY

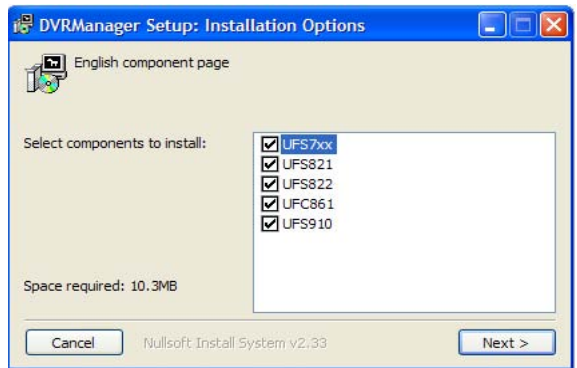
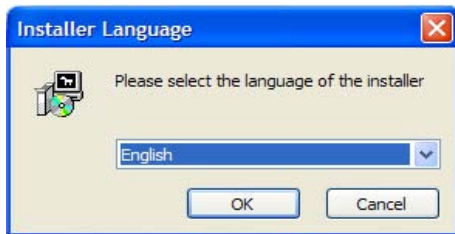
Tel.: +49 86 41 95 45-0
Fax.: +49 86 41 95 45-35 or -36
E-Mail: service@esc-kathrein.de
Internet: <http://www.esc-kathrein.de>

STANDARD INSTALLATION

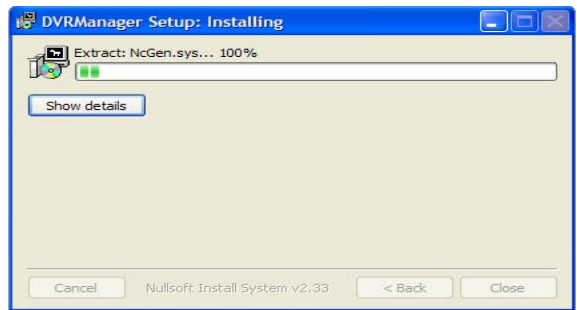
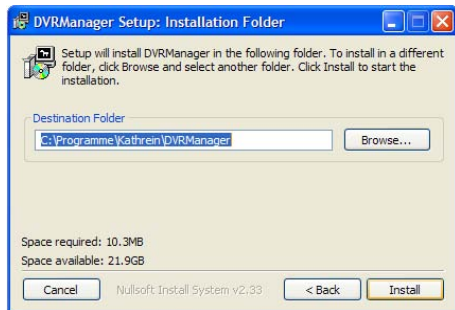
Important notes:

The software must be installed before the receiver is first connected to the PC!

1. Double-click the “DVRManager-xxxxxx.exe” file to start the installation routine.
2. Select the desired language and confirm by clicking the “OK” button.



3. Click to select the receiver model being used. The receivers marked with a checkbox are set up. Click on the “Next” button.
4. Click the “Install button. The software is installed on your PC.



5. The software has been installed on your PC. Once this display has disappeared, installation has been completed. (You will not receive a completion message).

USE OF THE PVR MANAGER WITH UFS 7XX

The PVR Manager offers many options for uploading and downloading between your receiver and your PC/laptop using an RJ 11/RS 232 connection.

The detailed instructions on these operations assume that the PVR Manager has been correctly installed as described under "Standard Installation".

1. Connect the receiver to your PC/ laptop using an RJ 11 to RS 232 cable.
2. Switch on the receiver at its power switch and press  to start it up
3. Start the PVR Manager (by clicking the icon on "Desktop" or by choosing "Start" - "Programmes"- "Kathrein" - "DVR-Manager" - "UFS 7xx"). The following display appears:



Channel list:

Channel list management (download/upload from/to receiver, rearranging/deleting/renaming channels, creation and management of favourite lists)

Upgrade:

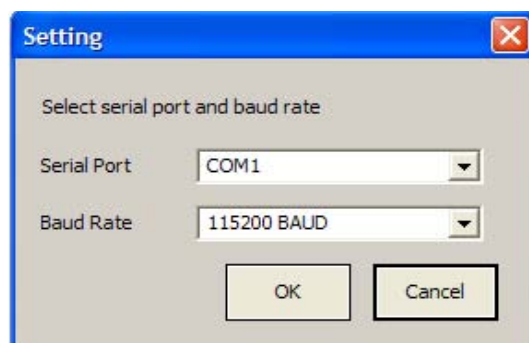
Upload a new software to your receiver via PC/laptop

Settings:

Here you can select the transmission path to be used between your PC/laptop and receiver (choice of port and Baud rate)

SETTINGS

Use this function to choose the settings for data transfer between your PC/laptop and your receiver. Click the "Settings" button. The following display will appear:



Serial Port:

Select the port on your PC/laptop with which you have established the connection to your receiver.

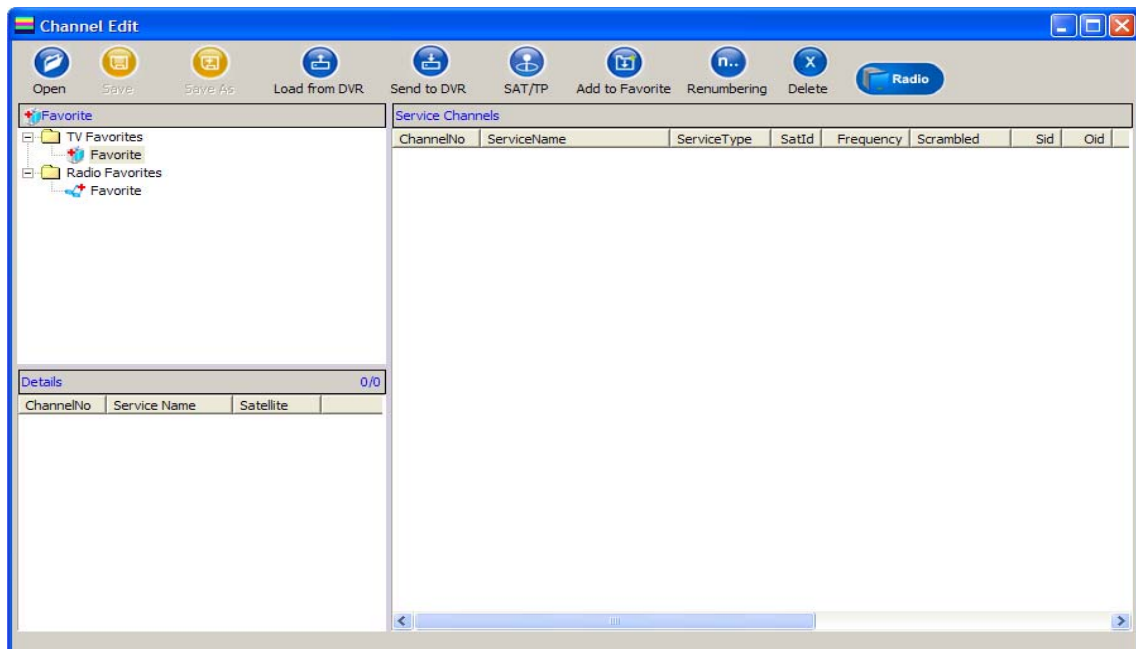
Baud Rate:

Define the Baud rate (transmission rate) at which the data are transferred from your PC/laptop to the receiver.

USE OF THE PVR MANAGER WITH UFS 7XX

CHANNEL LIST

Click on the “Channel” button. The following display appears:



Click “Radio” to switch between the TV and radio list settings. Right-click a channel to view the following editing possibilities:

OPEN

You can use this function to open a channel list stored on your PC or laptop. You can download the latest channel list for your UFS 7xx from the Internet at:

<http://www.kathrein.de> (Service → Software and Download → Receiver → UFS 7xx)

You can edit it as desired, and then transfer it to the UFS 7xx as under “Send to PVR”.

The advantage of this is that transferring the software from the PC to the UFS 7xx is faster than over the satellite.

SAVE/SAVE AS

You can use these functions to save a channel list edited according to your needs, to your PC or laptop. You can then open the channel list at any time, edit it and download it to your UFS 7xx as described under “Send to PVR”.

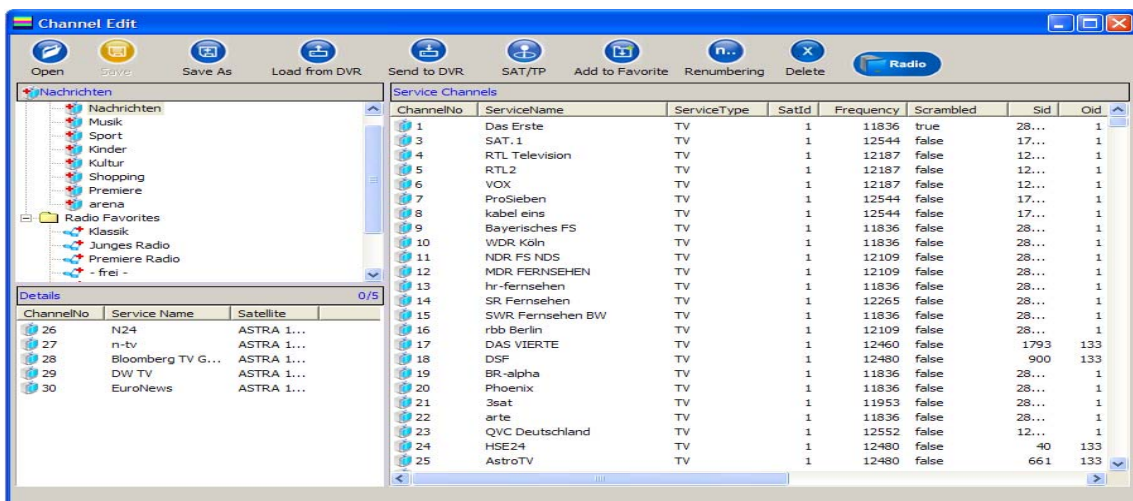
When you choose “Save” the system default storage location/file path is used; when you choose “Save As” you can specify the storage location/file path yourself.

USE OF THE PVR MANAGER WITH UFS 7XX

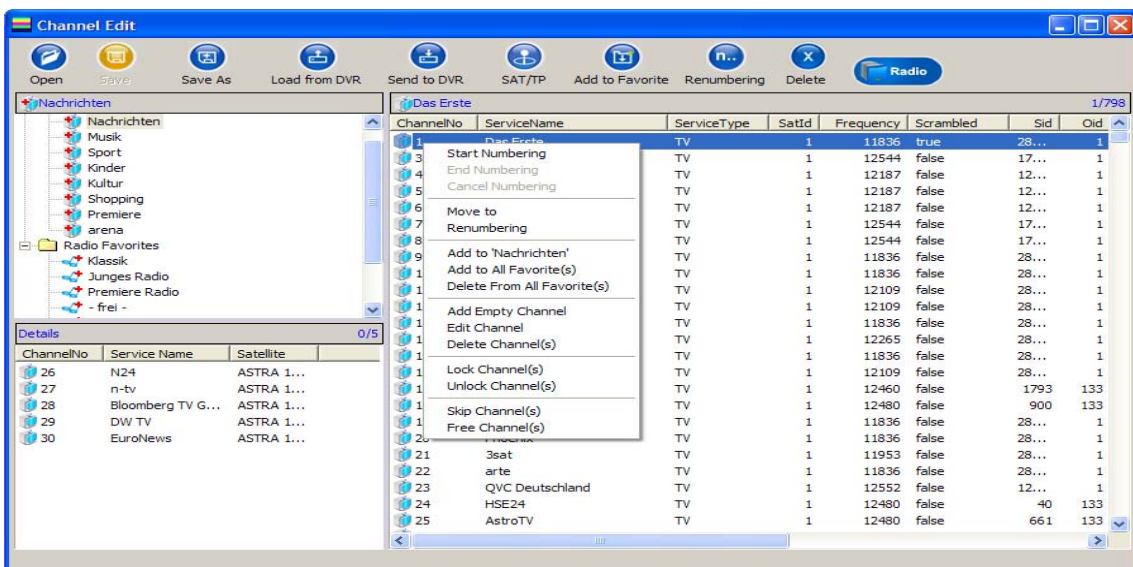
LOAD FROM PVR

You can use this function to upload the channel list currently in use on the UFS 7xx to this view and then edit it according to your needs (rearrange, sort, create favourites, etc.).

Click on the “Load from PVR” button. The on-screen progress bar indicates the current status of the transfer. As soon as the progress bar disappears, transfer is complete (the receiver will display the message “download done”). The following display appears (example):



Click a channel (channel will be highlighted in blue) and subsequently right-click. The following display will appear:



- **Start Numbering:** The channels can be renumbered manually as from a desired position (click).

USE OF THE PVR MANAGER WITH UFS 7XX

- **Move to:** Enter the position (channel number) to where the channel should be moved.
- **Renumber:** The channels are renumbered in their current sort order.
- **Add to new TV Favourite:** A new TV Favourite list is created and the previously selected channel is included in it.
- **Add to all Favourites:** Channel is added to all Favourites lists in the selected Favourites bank (TV/Radio)
- **Delete from all Favourites:** The channel is deleted from all Favourite lists of the selected Favourites bank (TV/Radio).
- **Add Empty Channel:** A new channel (Empty Channel) is inserted in the channel list in front of the selected position.
- **Edit channel:** Channel data can be entered/edited
- **Delete Channel:** The channel is deleted from the channel list.
- **Lock Channel:** Channel is locked (PIN check for access on receiver).
- **Unlock Channel:** Channel is unlocked.
- **Skip Channel:** Channel is skipped during zapping
- **Free channel:** Channel is no longer skipped during zapping.

All these changes only take effect once the channel list has been downloaded to the receiver again through the "Send to PVR" command.

SEND TO PVR

You can use this function to download the currently displayed channel list to the UFS 7xx. Click on the "Send to PVR" button. The on-screen progress bar indicates the current status of the transfer. As soon as the progress bar disappears, transfer is complete ("Upload done" appears in the receiver display).

SAT/TP EDIT (SATELLITE & TRANSPONDER)

Use this function to enter a new satellite and/or transponder. To do so, click on the "Sat/TP Edit" button. The following display appears (example):

Satid	Name	LO1	LO2	Ban...	Lon...	Ske
1	ASTRA 19.2E	9750	10600	11700	0	0
2	HOTBIRD 13.0E	9750	10600	11700	0	0
3	TURKSAT 42.0E	9750	10600	11700	0	0
4	ASTRA 23.5E	9750	10600	11700	0	0
5	ASTRA 28.2E	9750	10600	11700	0	0
6	SIRIUS 5.0E	9750	10600	11700	0	0
7	EUTELSAT 7.0E	9750	10600	11700	0	0
8	EUTELSAT 10.0E	9750	10600	11700	0	0
9	EUTELSAT 16.0E	9750	10600	11700	0	0

Freq	Symbol ...	Tsid	Oid	Pol
10773	22000	1053	1	H
10847	22000	1058	1	V
10832	22000	1057	1	H
10788	22000	1054	1	V
11097	22000	1042	1	V
10920	22000	1063	1	H
10861	22000	1059	1	H
11038	22000	1038	1	V
10818	22000	1056	1	V
10876	22000	1060	1	V
11152	22000	1044	1	V

Enter the data for the new satellite (upper pane)/transponder(lower pane) and then click "Add". The new data is added to the existing satellite/transponder list.

USE OF THE PVR MANAGER WITH UFS 7XX

RENAME/DELETE FAVOURITE

In order to perform this on the channel list currently on your UFS7xx, you must first use the feature “Load from PVR” to load the channel list to the menu “Edit channel”.

To perform this on a channel list saved to the hard disk, use the “Open” feature to load the channel list to the menu “Edit channel”.

First, specify whether a TV or radio favourite list is to be renamed/deleted by clicking “TV Favourites” or “Radio Favourites”. Next, click the desired favourite list and subsequently right-click. Then select the desired function with the left mouse button.

Rename:

Now use the keyboard to enter the desired name. See section “Add to Favourite” to learn how to add channels to a favourite list.

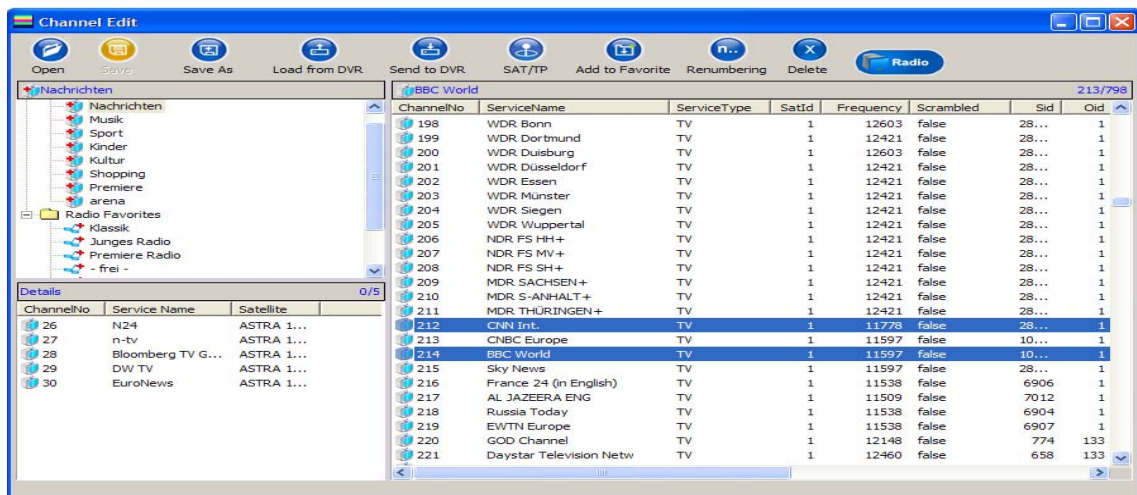
Delete:

All channels will be deleted from the selected favourite list and the list will be marked “empty”. How to add channels to a Favourite list is detailed under “Add to Favourite”. To rename the favourite list, proceed as described above.

ADD TO FAVOURITE

Use this function to add one or more previously selected channels to a desired favourite list. First, click the favourite list to which you would like to add the channel. Then, click the desired channel. Now click the “Add to Favourite” button. **OR:**

Click the desired channel and hold down. Now drag the channel to the favourite list to which the channel is to be added. To select several channels, hold the Ctrl key down while clicking on the channels with your mouse (see screenshot).



RENUMBER

Since the current version of the PVR Manager automatically renumbers channels after they have been repositioned, this feature is not necessary.

DELETE

Use this function to delete data (channels, Favourite lists, etc.) that you have previously selected.

USE OF THE PVR MANAGER WITH UFS 7XX

RADIO

You can use this function to switch between the TV and radio channel listings.

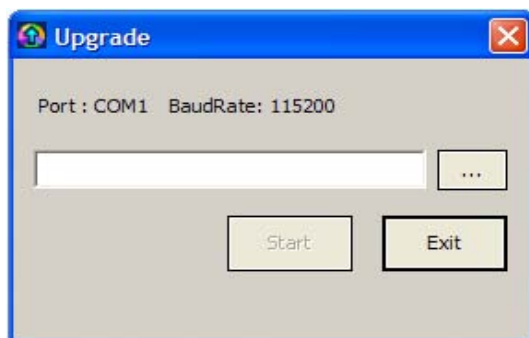
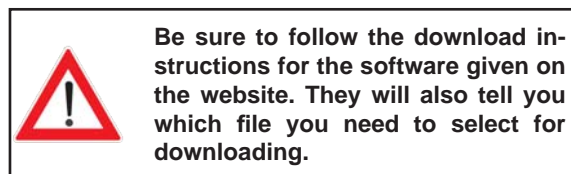
UPGRADE (UPDATE RECEIVER FIRMWARE)

You can use this function to download the software directly from PC to the UFS 7xx. You can download the latest software for your UFS 7xx from the Internet at:

<http://www.kathrein.de> (Service → Software and Downloads → Receivers → UFS 7xx)

The advantage of this is that transferring the software from the PC to the UFS 7xx is faster than over the satellite.

Click on the "Upgrade" button. The following display appears:



Click the "..." option to select the software to download. When you have selected the software, click "Start". The new software is transferred to the receiver.

Internet: <http://www.kathrein.de>

KATHREIN-Werke KG • Anton-Kathrein-Straße 1 - 3
P.O. Box 10 04 44 • 83004 Rosenheim/GERMANY

KATHREIN
Antennen • Electronic

936.3322/-/0208/ZWT - Subject to technical change!