

## Kathrein PCA Driver Installation Guide for Windows 7

### Content

<b>1. Introduction.....</b>	<b>2</b>
<b>2. Installing Drivers.....</b>	<b>3</b>

Page: 1/11	Date: 2010-03-19	Version: 1.00
File: PCA_Driver_installation_guide_Windows_7		

## 1. Introduction

The purpose of this application note is to provide users of the Kathrein PCA with a simple procedure for installing the driver for the Kathrein PCA device under Windows 7.

Page: 2/11	Date: 2010-03-19	Version: 1.00
File: PCA_Driver_installation_guide_Windows_7		

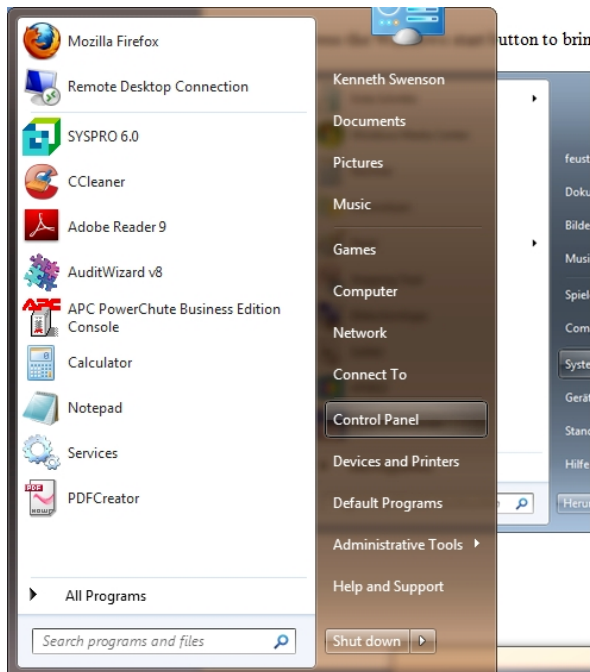
## 2. Installing a Driver

To install a driver for a Kathrein PCA under Windows 7, follow the instructions below:

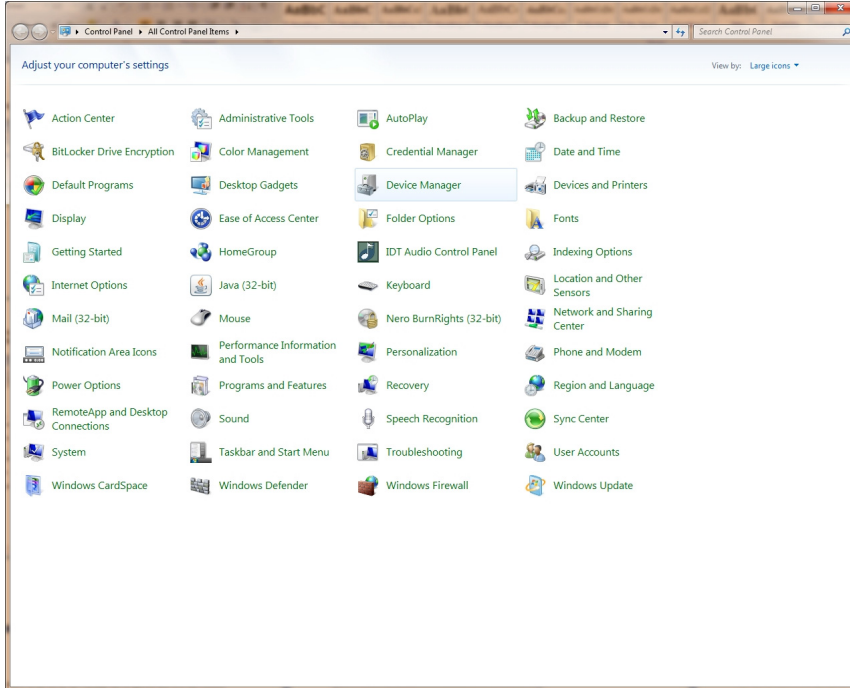
Connect the device to a spare USB port on your PC.

If no suitable driver is automatically found the described procedure should be followed.

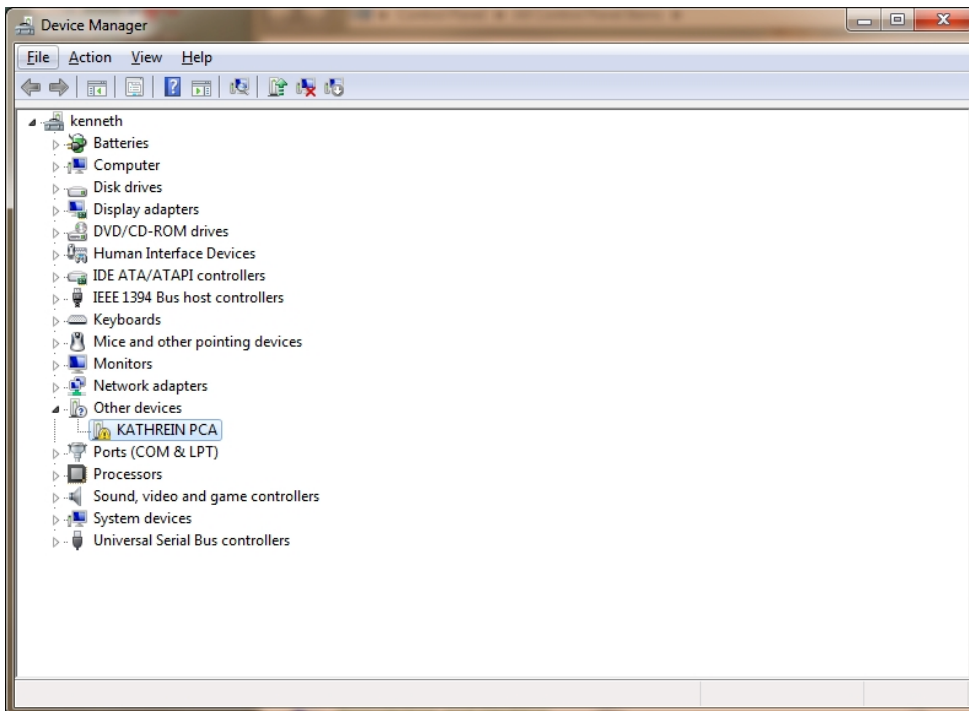
Press the Windows start button to bring up the start menu and select „Control Panel“



From the Control Panel window select „Device Manager“

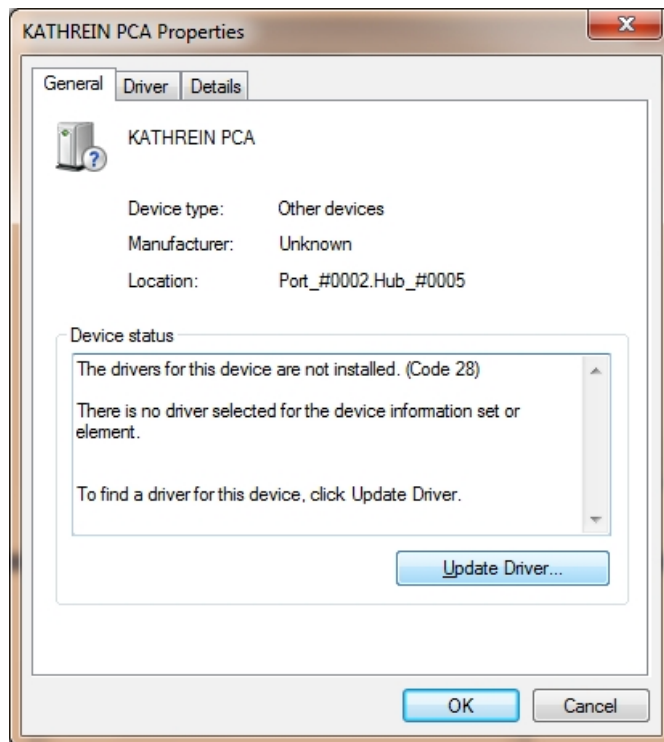


In the Device Manager window there will be a device under “Other devices” with a yellow warning symbol to indicate a problem e.g. no driver installed.



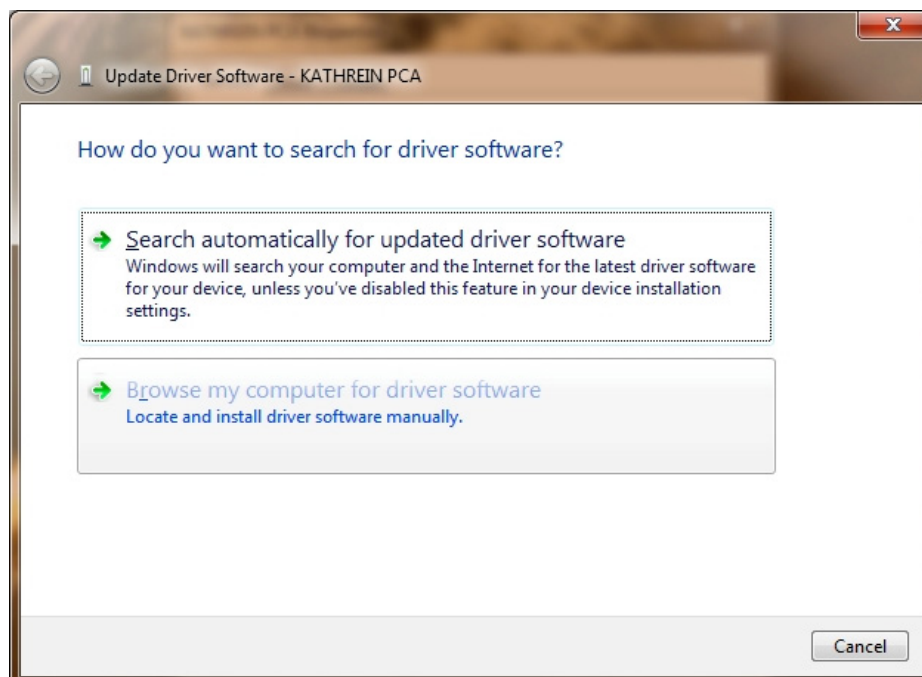
**Application Note**

Double click on the other device (KATHREIN PCA) to bring up the Properties window.



From the displayed menu select „Update Driver“.

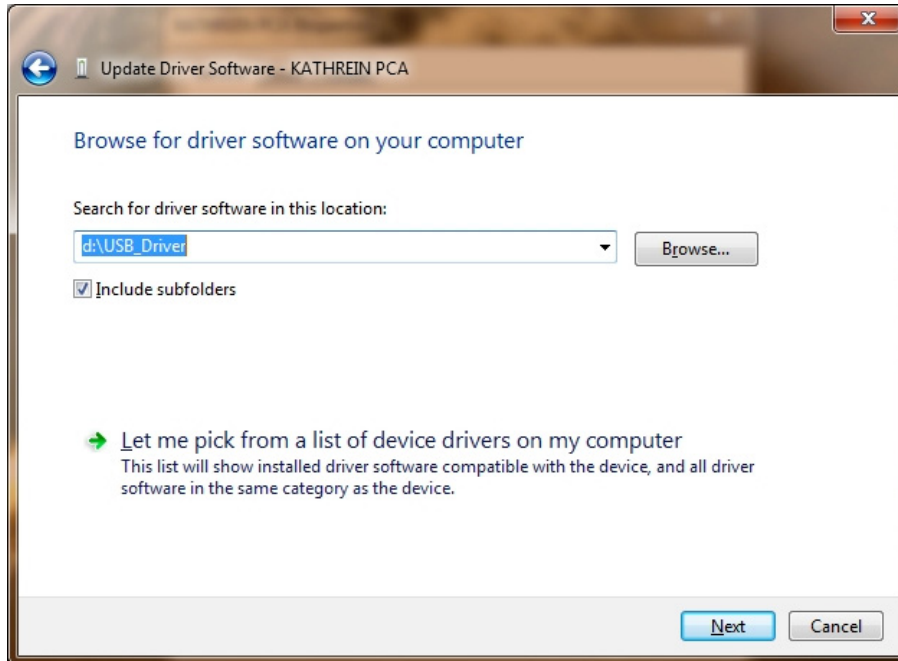
The following window displays the option for an automatic search or a manual search.



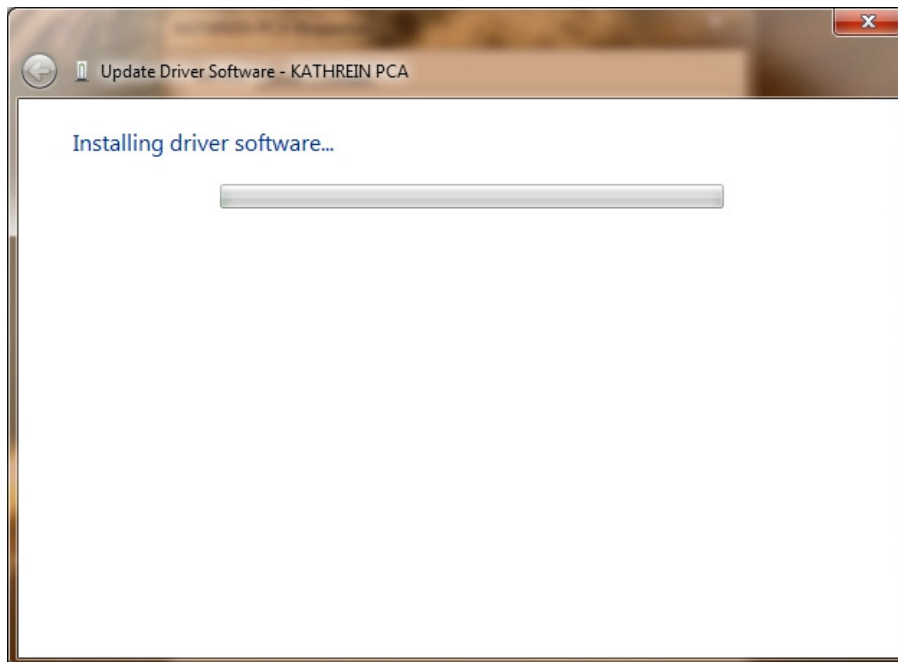
Select the second option to browse manually.

Page: 5/11	Date: 2010-03-19	Version: 1.00
File: PCA_Driver_installation_guide_Windows_7		

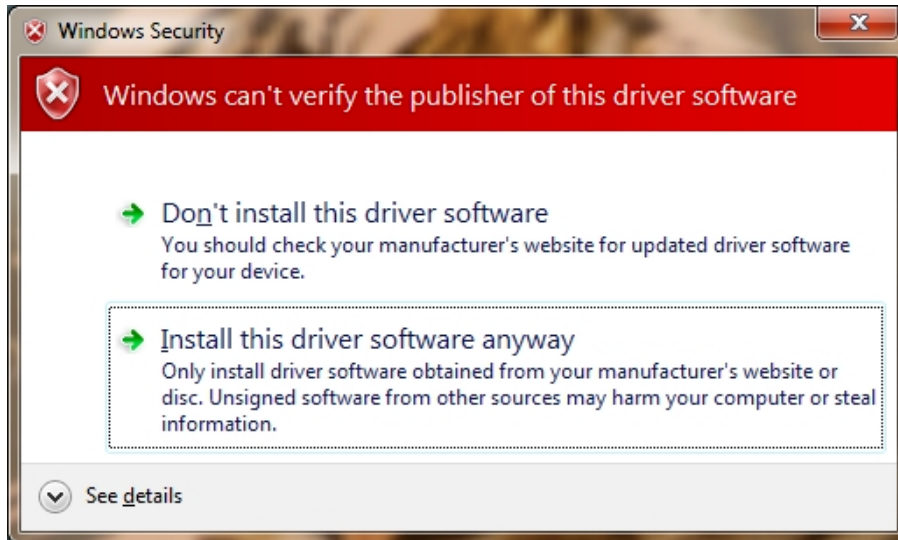
In the address box put the exact location where the drivers are located. This is normally on the CD delivered with your KATHREIN PCA. It is not necessarily the exact same drive letter as shown in the screenshot.



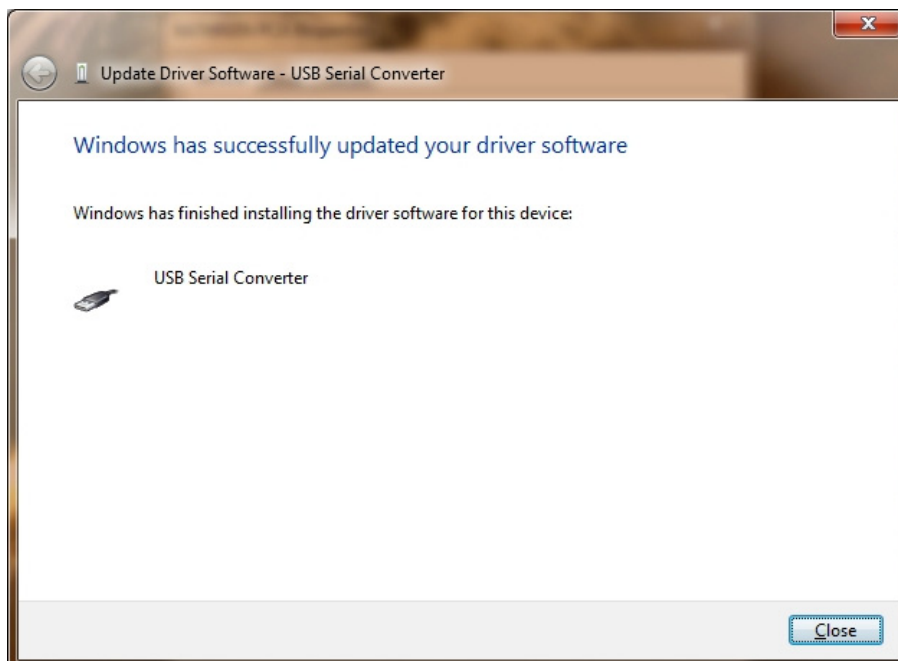
After entering the address select „Next“ to start the installation.



If you are certain of the source of the driver the warning can be ignored and you can continue installation by selecting „Install this driver software anyway“.

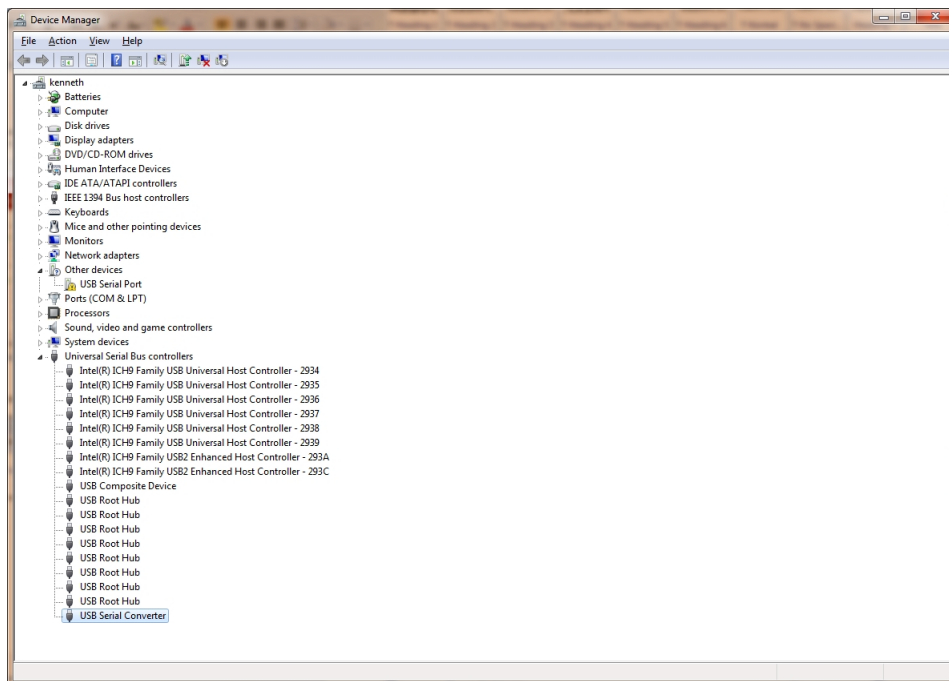
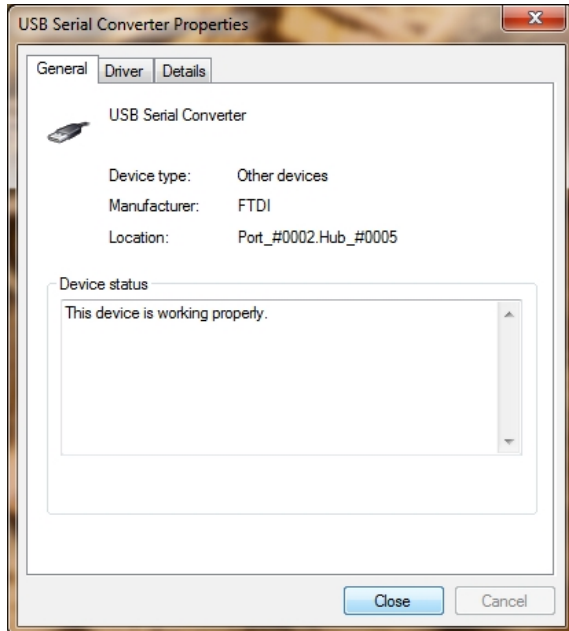


When the installation has finished a completion screen is displayed.

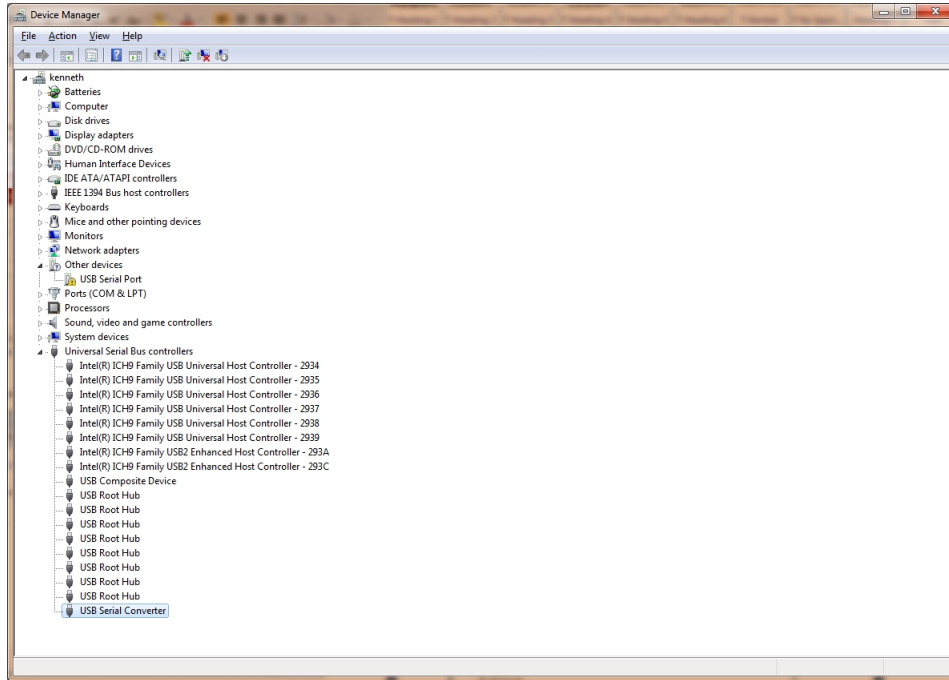


Press „Close“ to close this window.

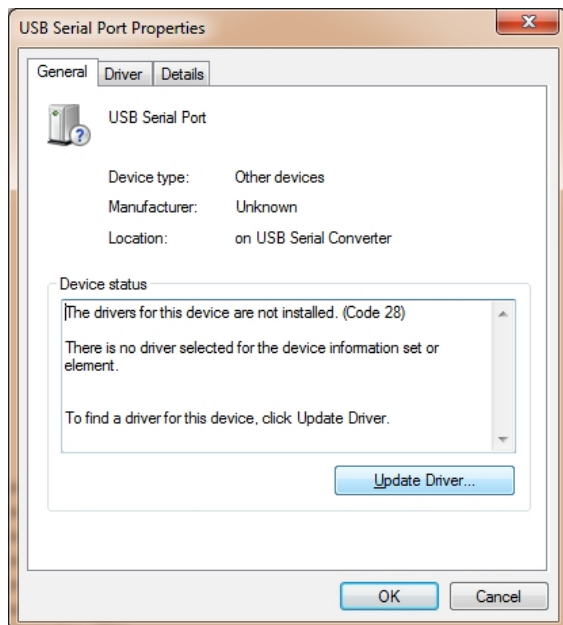
Press „Close“ to close the Properties window and go back to the Device-Manager Window.



The Device Manager will still show a device under “Other devices” but in addition to this there is a new entry under USB Controller indicated in the screenshot above as the USB Serial Converter. This indicates the bus layer of the driver is installed. Installing the virtual Com Port layer of the driver is almost a repeat of the last few steps.

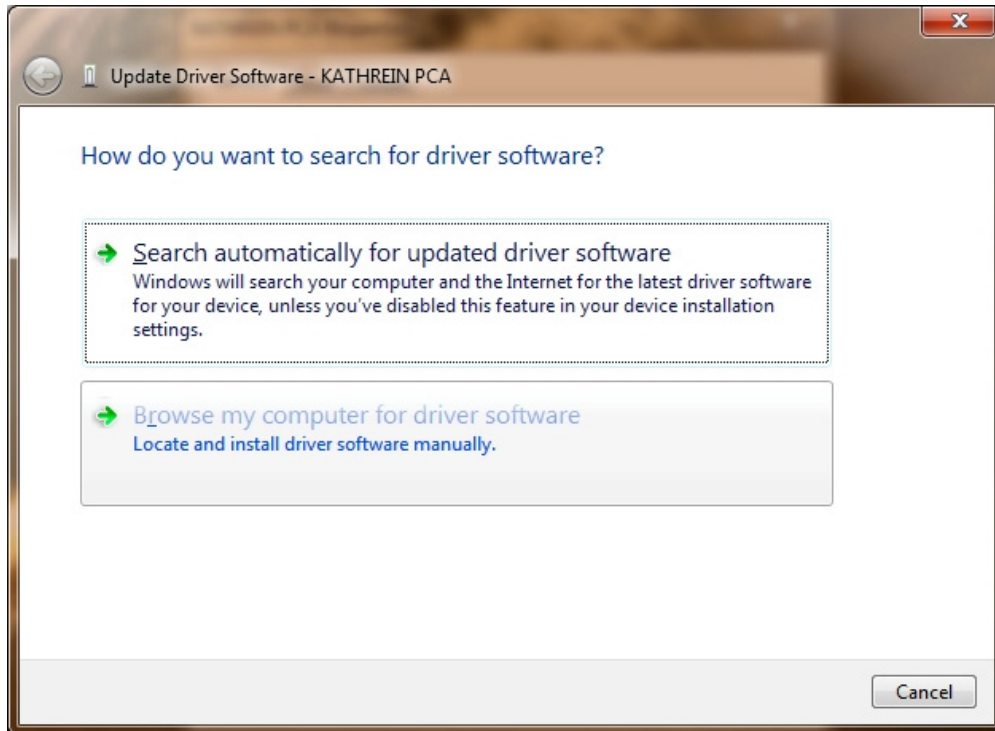


Double click on the Other devices (USB Serial Port) to bring up the Properties window as shown below.



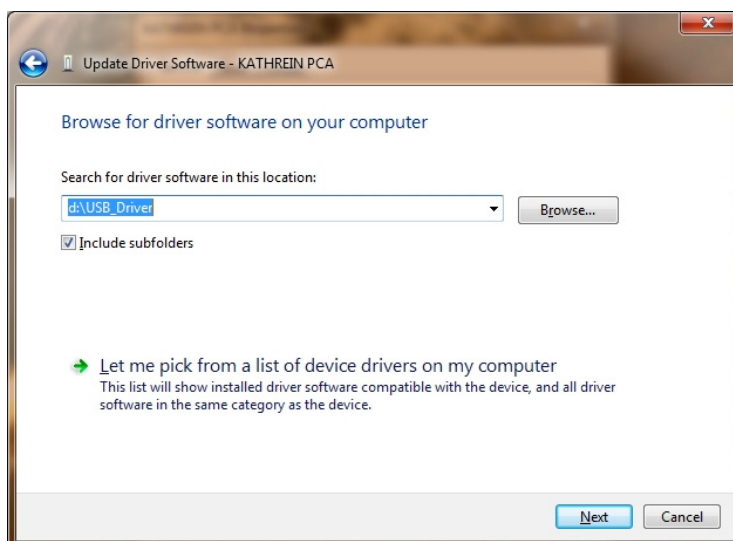
From the displayed menu select „Update Driver“

This then displays the option for an automatic search or a manual search.



Select the second option to browse manually.

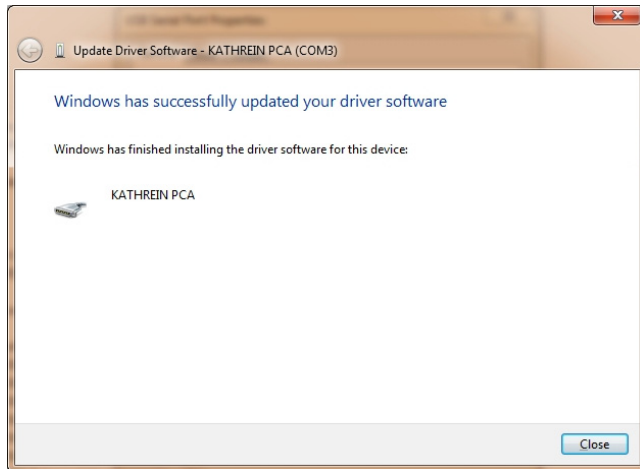
In the address box put the exact location where the drivers are located. This is normally on the CD delivered with your PCA. It is not necessarily the exact same drive letter as shown in the screenshot.



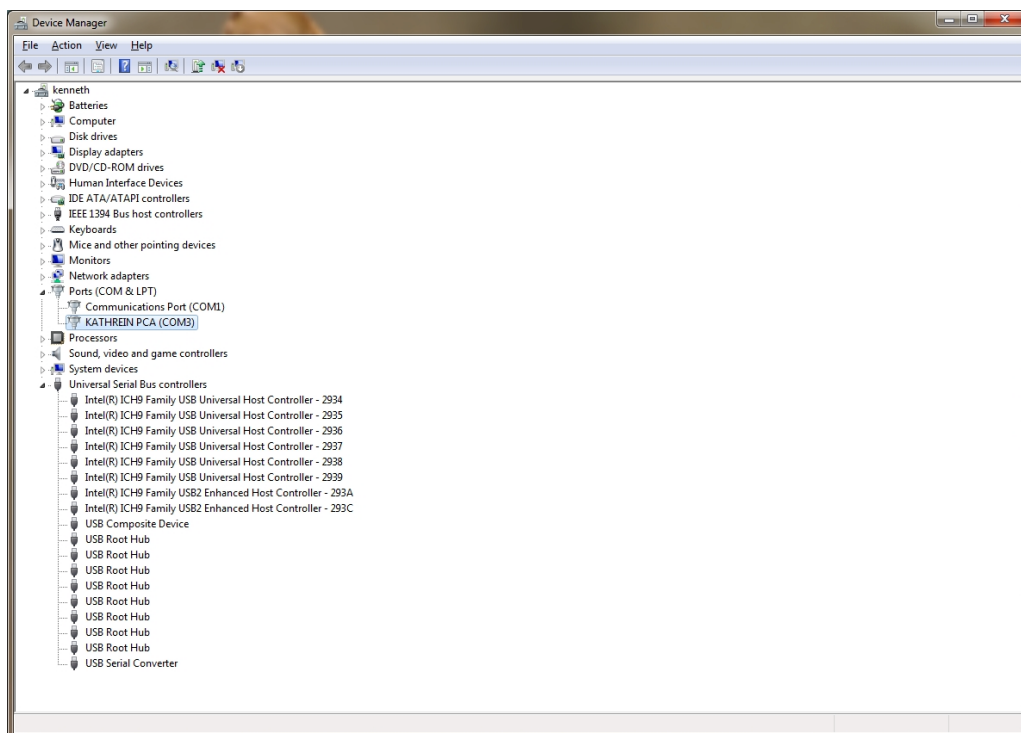
After entering the address select „Next“ to start the installation.

Page: 10/11	Date: 2010-03-19	Version: 1.00
File: PCA_Driver_installation_guide_Windows_7		

When the installation is finished a completion screen is displayed.



Note this screen also displays the COM post assigned to the device. Press Close to close this window and go back to the Device Manager Window.



This time the Device Manager does not have a USB Serial Port under Other devices but shows entries under USB-Controller and Ports (COM & LPT). The above screen shot displays a correct installation. The device is now ready to use on COM3.

Note: Not all devices will install to COM3. The COM port allocation is determined by the installation wizard on the basis of the next free com port as designated in the PC registry.

Page: 11/11	Date: 2010-03-19	Version: 1.00
File: PCA_Driver_installation_guide_Windows_7		