

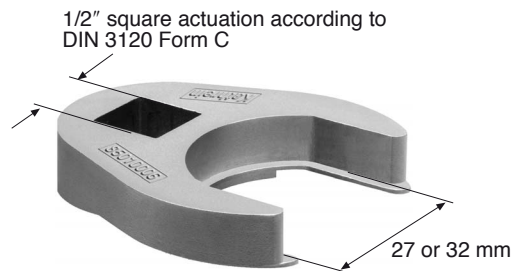
Kathrein Installation Tool for Triple-band Antennas Type No. 850 10005

Please note: To avoid any damage to the interfaces, please ensure that only suitable tools are used. To tighten the feederline connector interfaces, we strongly recommend using a special Kathrein installation tool (as shown below) in combination with a standard torque-wrench.

Kathrein installation set: Type No. 850 10005

Set has to be ordered separately!

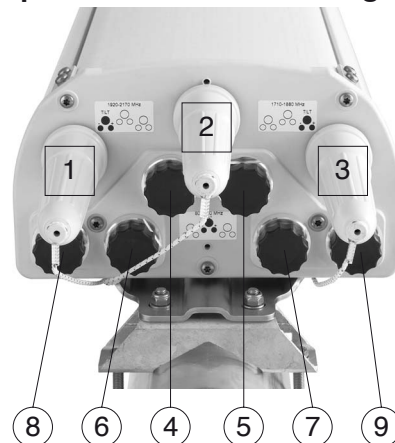
Set consists of two spanners of 27 and 32 mm width.



These tools are suitable for 7-16 connectors with a wrench size of 27 mm or 32 mm.

Tighten nut within a torque range of **25 – 33 Nm** depending on connector manufacturers' specifications.

Description of connector arrangement:



Adjustment mechanisms (1 – 3)

Feederline connectors (4 – 9)

There are six feederline connectors and three adjustment mechanisms located at the bottom of the antenna.

For detailed information about feederline installation for Triple-band Antennas please see Kathrein RET system brochure.