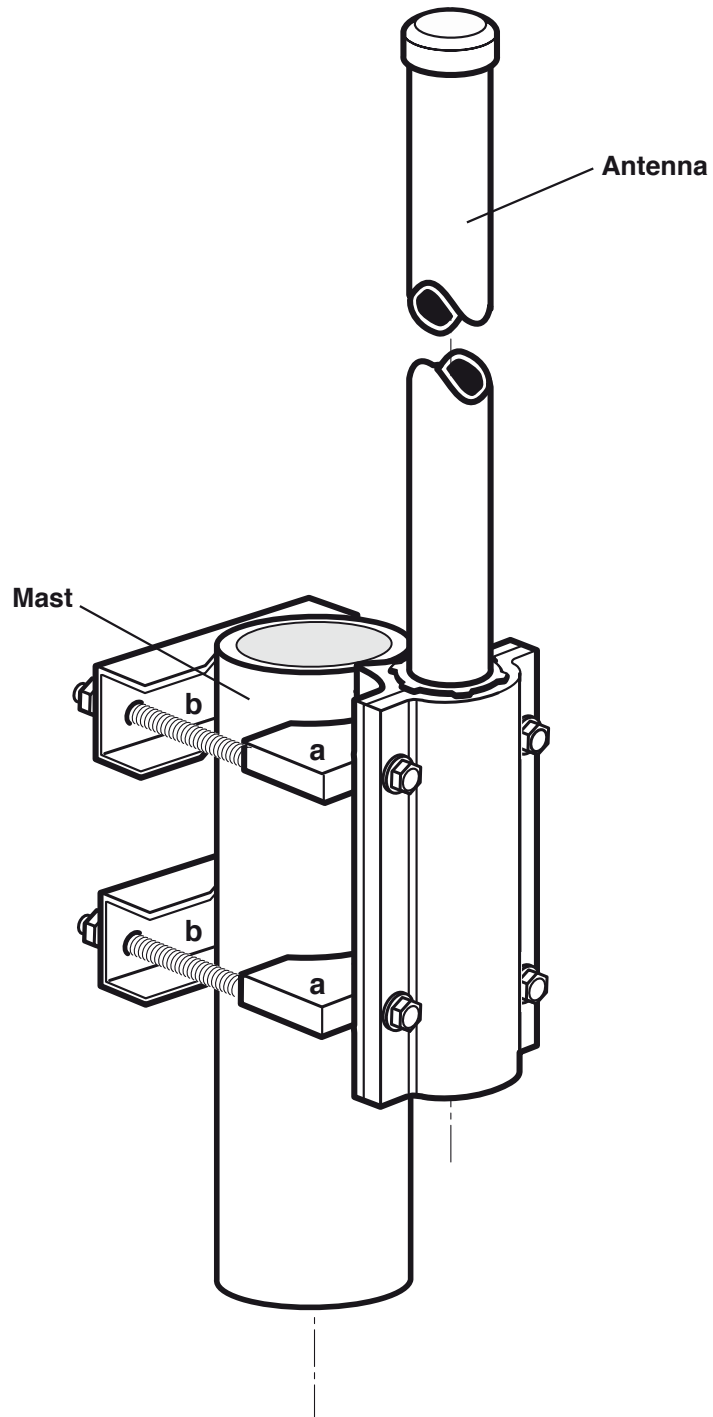


Side-mounting Clamp Omnidirectional Antennas Large Pipe

Type No. 738 908

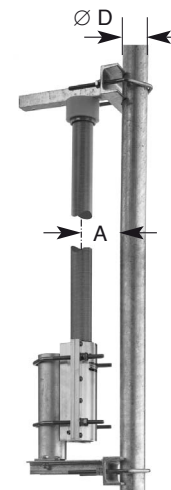
For mast diameters of 94 – 125 mm



Side-mounting Bracket Omnidirectional Antennas

Type No. 737 398

Side-mounting bracket
(for mast diameters of 40 – 105 mm)



Type No.	737 398			
Bracket	At the top and at the bottom			
Fits for antenna type no:	800/900 MHz	1800 MHz	UMTS	Dual-band
	736 347	739 785	741 790	800 10274
	736 348	738 187		
	736 349	739 404		
	736 350	737 190		
	736 351			
	738 664			
	738 192			

Side-mounting is possible for four fixed distances between the tubular mast and the antenna:

800/900 MHz (holes 1 and 3)			1800/2000 MHz (hole 2)								
<p>$A = 100 \text{ mm} = 0.3 \lambda$</p>			<p>$A = 160 \text{ mm} = 0.5 \lambda$</p>			<p>$A = 240 \text{ mm} = 0.75 \lambda$</p>			<p>$A = 80 \text{ mm} = 0.5 \lambda$</p>		
Pipe D	Horizontal Radiation Pattern	Spacing A / Curve	Pipe D	Horizontal Radiation Pattern	Spacing A / Curve	Pipe D / Curve	Horizontal Radiation Pattern	Spacing A			
40 mm	<p>direction from mast to antenna →</p>	100 mm	100 mm	<p>direction from mast to antenna →</p>	100 mm	40 mm	<p>direction from mast to antenna →</p>	80 mm			
		160 mm			160 mm						
		240 mm			240 mm						

Side-mounting Brackets Omnidirectional Antennas 900

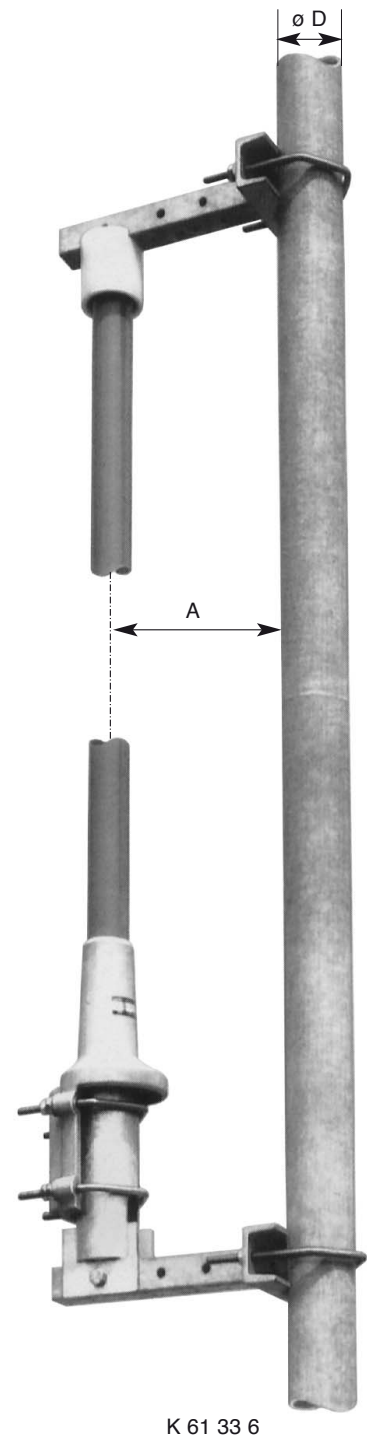
For mast diameters of 40 – 105 mm

Type No.	K 61 33 5	K 61 33 6
Bracket	at the bottom only	at both the top and the bottom
Fits for antenna type no.	K 75 11 6 .. K 75 15 6 ..	738 779 741 558

Side mounting is possible for three fixed distances between the tubular mast and the antenna:

- 100 mm = 0.3λ
- 160 mm = 0.5λ
- 240 mm = 0.75λ

Pipe D	Horizontal Radiation Pattern	Spacing A Curve	Additional gain to the nominal value of the antenna gain
40 mm		100 mm	2 dB
		160 mm	3 dB
		240 mm	2 dB
100 mm		100 mm	2.5 dB
		160 mm	3.5 dB
		240 mm	2.5 dB



K 61 33 6