

Directional Antenna

100 – 160 MHz

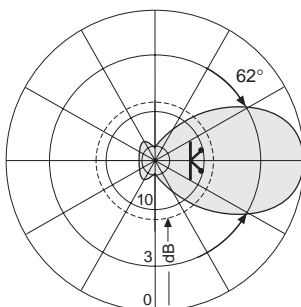
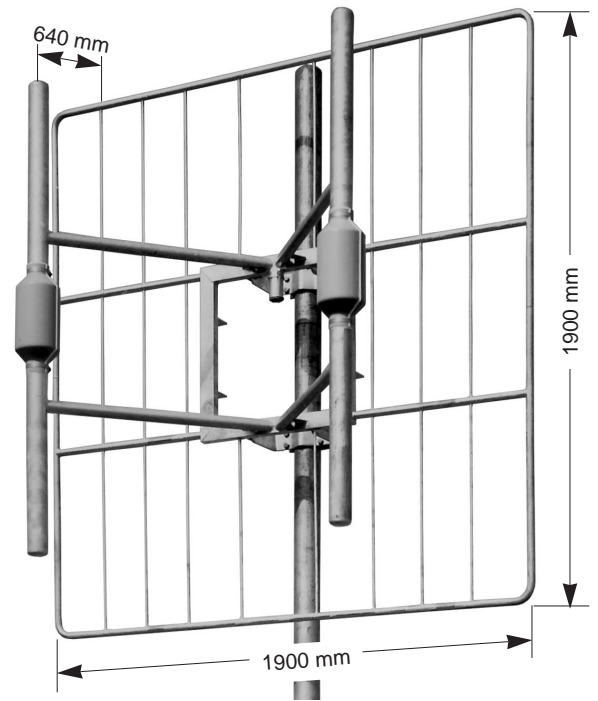
K 52 30 31

KATHREIN
Antennen · Electronic

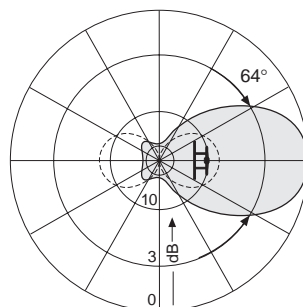
A heavy duty 8 dB gain panel of hot dip galvanized steel for use under heavy icing

Type No.	K 52 30 31
Input	N female connector in a weather protective housing directly at the antenna
Frequency range	100 – 160 MHz
VSWR	< 1.3
Gain (ref. $\lambda/2$ dipole)	8 dB
Impedance	50 Ω
Polarization	Horizontal or vertical
Max. Power	1590 Watt (at 50 °C ambient temperature)
Weight	35 kg
Windload	1200 N (at 160 km/h)
Max. wind velocity	200 km/h (incl. $1/2''$ radial ice)
Packing size	2000 x 2000 x 850 mm
Height/width/depth	1900 x 1900 x 640 mm

- Material:** Hot dip galvanized steel.
All screws and nuts: Stainless steel.
- Montage:** By means of a pair of hot dip galvanized steel clamps K 61 12 0 to pipes of 60 – 115 mm OD or the pair of clamps K 61 13 0 to pipes of 115 – 200 mm.
- Grounding:** All metal parts of the antenna including the mounting kit are DC grounded.
- Scope of supply:** Panel without mounting hardware.
- Special features:** The fiberglass cover of the radiators keeps the electrical characteristics, even under heavy icing conditions, nearly constant.

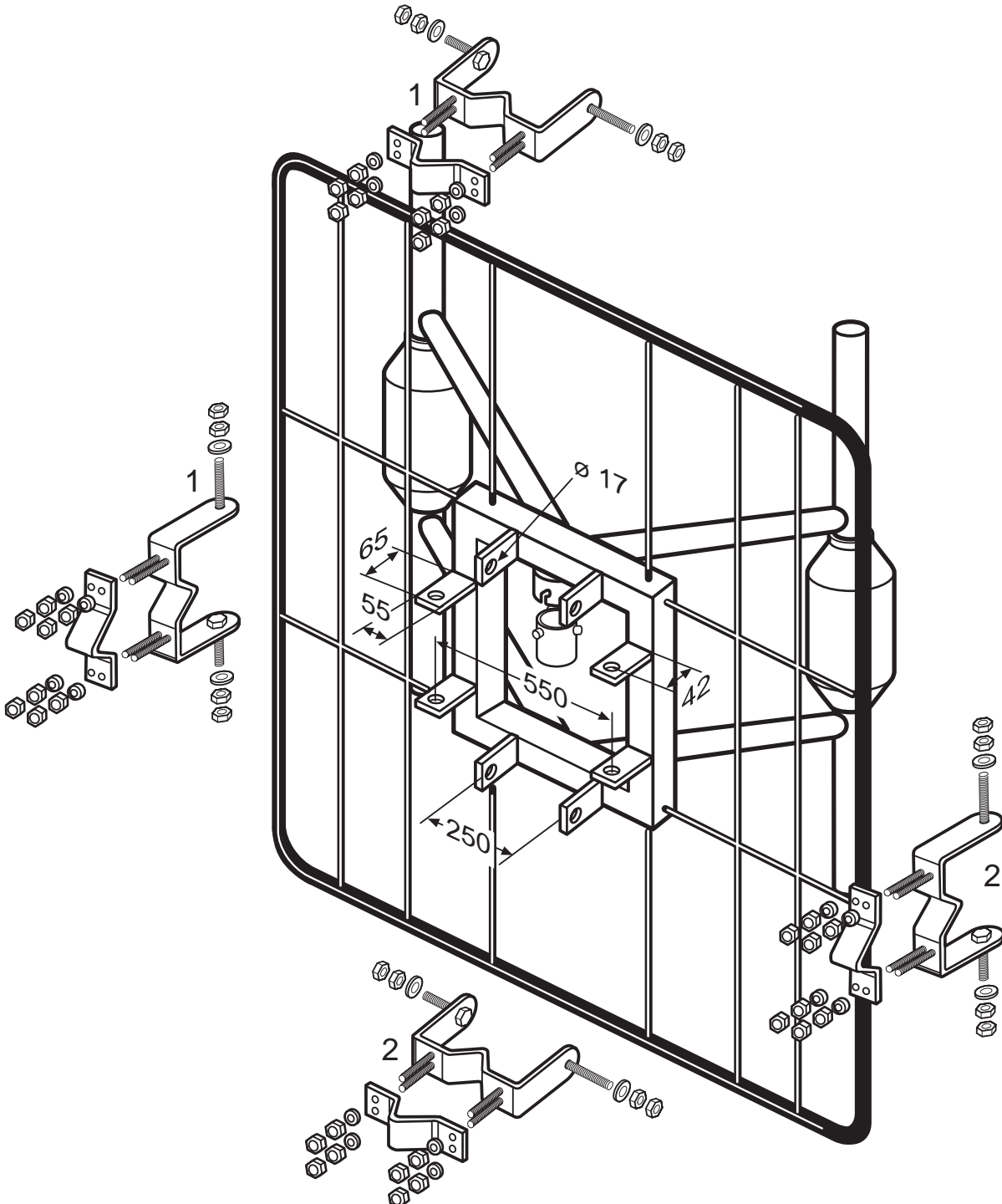


Horizontal Pattern



Vertical Pattern

Mounting Instruction Directional Antenna K 52 30 31



1, 2: Pair of clamps K 61 12 0 for pipes of 60 – 115 mm OD or pair of clamps K 61 13 0 for pipes of 115 – 200 mm OD

Required metric wrenches: 19 mm and 24 mm