

Logarithmic-periodic Antennas Vertical/Horizontal Polarization Half-power Beam Width

406–512

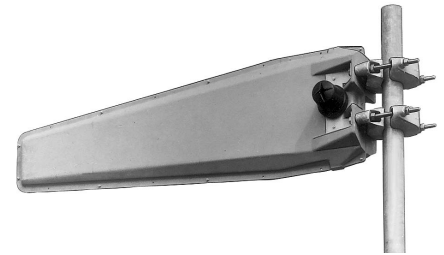
V or H

67° or 53°

KATHREIN
Antennen · Electronic

VPol/HPol LogPer 406–512 67° 10.5dBi

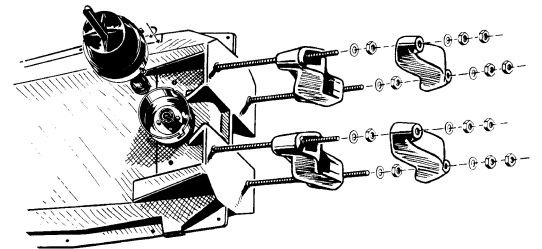
Type No.	K 72 22 41	K 72 22 47
Frequency range	406 – 512 MHz	
Polarization	Vertical	
Gain	10.5 dBi	
Half-power beam width	H-plane: 67° E-plane: 53°	
Side-lobe Suppression	> 25 dB at 440 – 512 MHz > 20 dB at 406 – 440 MHz	
Impedance	50 Ω	
VSWR	< 1.4	
Max. power	300 W (at 50 °C ambient temperature)	



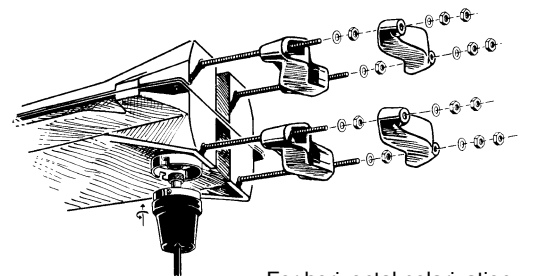
For vertical polarization



For horizontal polarization

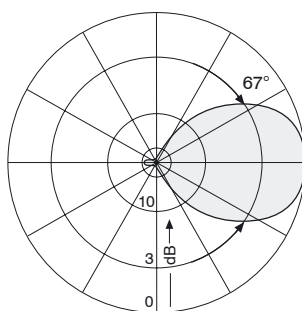


For vertical polarization

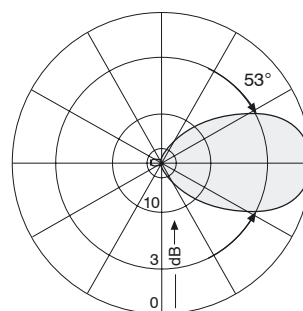


For horizontal polarization

- Arrays:** Several antennas can be combined to increase the gain and to produce radiation patterns with very high side-lobe suppressions.
- Scope of supply:** Antenna with weather protective casing for straight connectors.
- Material:** Radiator and mounting kit: Aluminum.
Radome: Fiberglass, colour: Grey.
All screws and nuts: Stainless steel.
- Attachment:** To tubular masts of 48 – 115 mm diameter using supplied clamps.
- Ice protection:** Due to the very sturdy antenna construction and the protection of the radiating system by the radome, the antenna remains operational even under icy conditions.
- Grounding:** All metal parts of the antenna including the mounting kit and the inner conductor are DC grounded.



Radiation Pattern
in H-Plane



Radiation Pattern
in E-Plane

Mechanical specifications	K 72 22 41	K 72 22 47
Input	N female	7-16 female
Weight	9 kg	
Wind load: Vertical:	Frontal: 55 N (at 150 km/h)	Lateral: 440 N (at 150 km/h)
Horizontal:	Frontal: 55 N (at 150 km/h)	Lateral: 90 N (at 150 km/h)
Max. wind velocity	180 km/h	
Packing size	1172 x 372 x 225 mm	
Height/width/depth	1153 / 353 / 180 mm	

936.2829/a Subject to alteration.

Logarithmic-periodic Antennas Vertical/Horizontal Polarization Half-power Beam Width

406–512

V or H

67° or 53°

KATHREIN
Antennen · Electronic

Please note:

As a result of more stringent legal regulations and judgements regarding product liability, we are obliged to point out certain risks that may arise when products are used under extraordinary operating conditions.

The mechanical design is based on the environmental conditions as stipulated in ETS 300 019-1-4, which includes the static mechanical load imposed on an antenna by wind at maximum velocity. Extraordinary operating conditions, such as heavy icing or exceptional dynamic stress (e.g. strain caused by oscillating support structures), may result in the breakage of an antenna or even cause it to fall to the ground. These facts must be considered during the site planning process.

The installation team must be properly qualified and also be familiar with the relevant national safety regulations.

The details given in our data sheets have to be followed carefully when installing the antennas and accessories.

The limits for the coupling torque of RF-connectors, recommended by the connector manufacturers must be obeyed.

Any previous datasheet issues have now become invalid.

